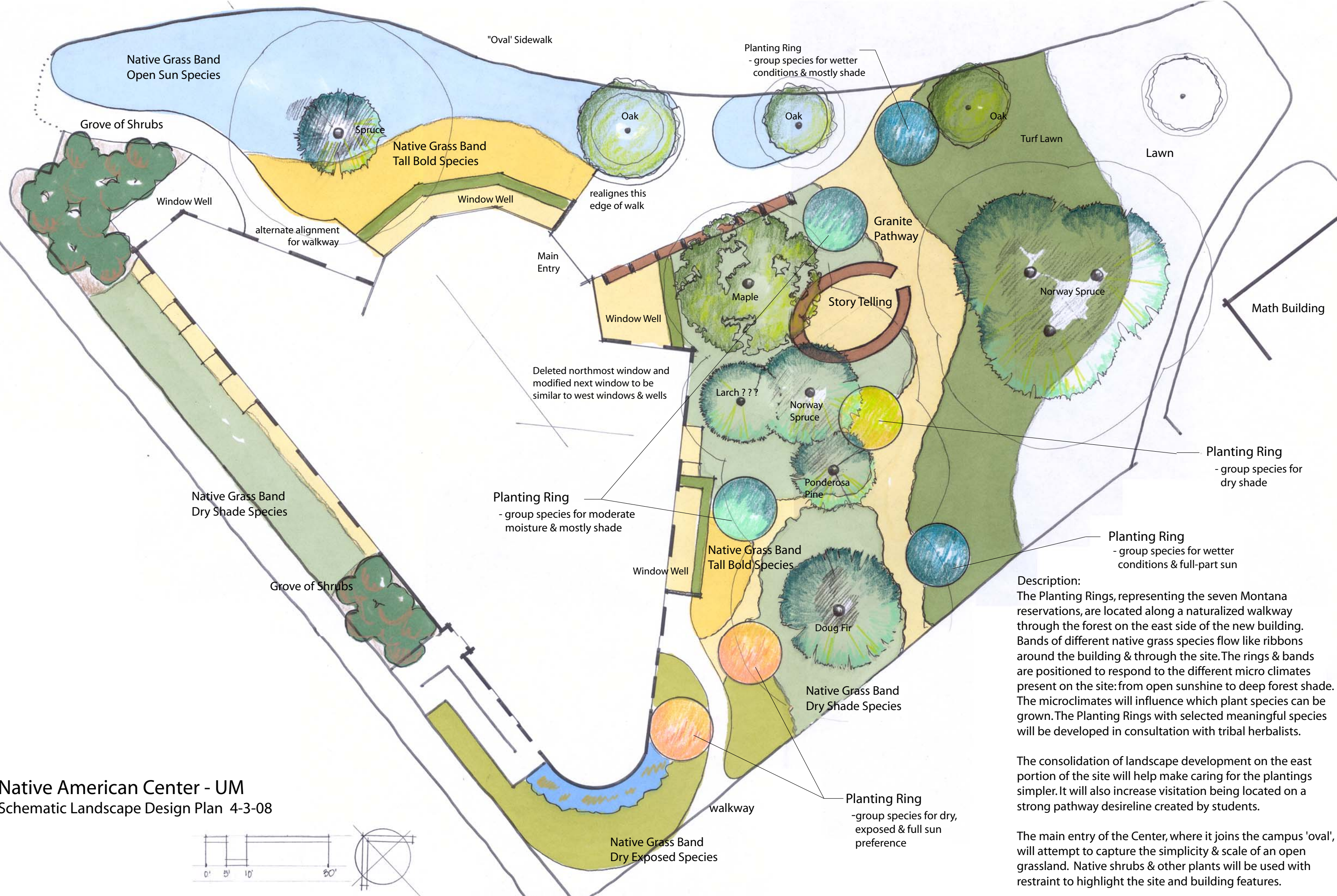
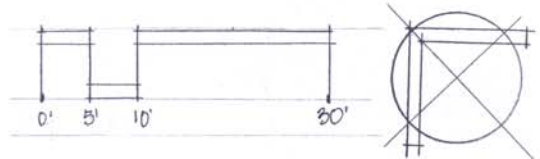


Native American Center - UM
 Schematic Landscape Design Plan 4-3-08



Description:
 The Planting Rings, representing the seven Montana reservations, are located along a naturalized walkway through the forest on the east side of the new building. Bands of different native grass species flow like ribbons around the building & through the site. The rings & bands are positioned to respond to the different micro climates present on the site: from open sunshine to deep forest shade. The microclimates will influence which plant species can be grown. The Planting Rings with selected meaningful species will be developed in consultation with tribal herbalists.

The consolidation of landscape development on the east portion of the site will help make caring for the plantings simpler. It will also increase visitation being located on a strong pathway desireline created by students.

The main entry of the Center, where it joins the campus 'oval', will attempt to capture the simplicity & scale of an open grassland. Native shrubs & other plants will be used with restraint to highlight the site and building features.